

## Rozetna Hole cover



**Namena:** Za estetski deo bakarnog (Cu) cevovoda, na prolasku, kroz zid pokriva grešku bušenja i omogućava rasterećenje dilatacionog kretanja.

**Osobine:** Pozicije su urađene od visoko kvalitetnog PP copolymera uz dodatak aditiva i boje, tehnološkim postupkom inekcijskog brizganja, što proizvodu daje elastičnost i termičku postojanost za primenu u temperaturnom području od  $-10^{\circ}$  do  $+118^{\circ}\text{C}$ . Konstrukcija proizvoda omogućava montažu na gotovom cevovodu. Kod dvocevnog sistema sa ugradnjom naših dvorednih nosača omogućava kvalitetnu estetsku montažu s obzirom da se osno rastojanje cevovoda podudara sa tangentom vanjskog prečnika.

**Dimenzije:** Prema crtežu i priloženoj tabeli.

**Boja:** Bela.

**Pakovanje:** Prema priloženoj tabeli. Osnovno u PE vrećicu a zbirno u kartonsku kutiju.

**Purpose:** For the esthetic part of the cuprous (Cu) pipelines, on the passage through the wall, covers the drilling error and enables the disburdening of the dilatation movements.

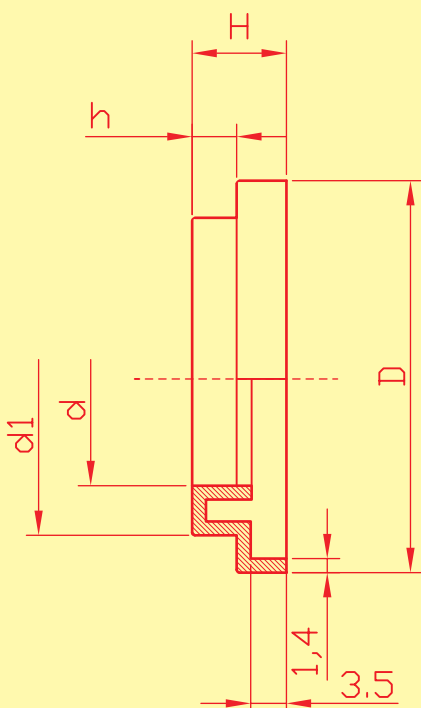
**Characteristics:** Positions have been made of high-grade PP copolymer including additives and color, with technological process of the injection gushing, that provides the flexibility and the thermal stability of the product for the use in the temperature range from  $-10^{\circ}$  up to  $+118^{\circ}\text{C}$ . The structure of the product enables the installation on the finished pipeline. At the double-barrelled system with the installation our double-rowed girders enables the quality esthetic installation considering axial distance of pipelines corresponds with the tangent of outside diameter.

**Dimensions:** Towards the figure and the enclosed table.

**Colour:** White.

**Packaging:** Towards the enclosed table.

Basic in PE bag and collective in cardboard box.



Šifra artikla	Oznaka	Pakovanje; osnovno/zbirno
Code of article	Ref. Code	Packaging ; basic / collective
01-0018	fi 12	100/4000
01-0019	fi 14/15	100/4000
01-0020	fi 18	100/4000
01-0021	fi 20/22	100/3000
01-0022	fi 28	100/2000

fi	d	D	d1	H	h
12	11,8	33	25,4	9,7	5
14/15	14,8	33,4	26	9,7	4,7
18	17,5	33,5	26,8	9,7	4,7
22	19,8	39,5	32	9,7	4,7
28	27,8	49	38,3	9,7	4,7